

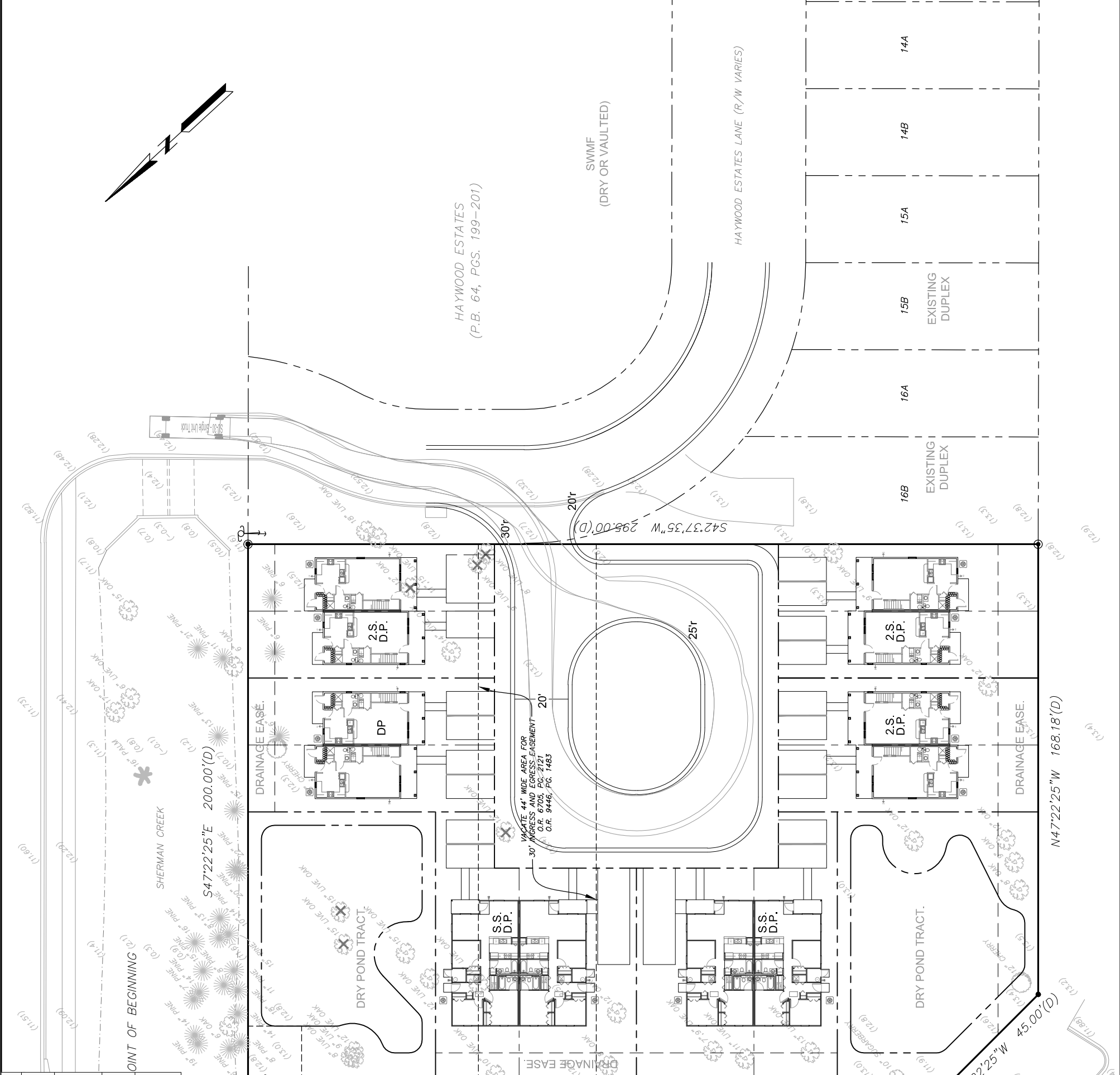
|     |      |             |
|-----|------|-------------|
| NO. | DATE | DESCRIPTION |
|     |      |             |
|     |      |             |
|     |      |             |
|     |      |             |
|     |      |             |

DESIGNED BY: JPL  
 CHECKED BY: JPL  
 SCALE: 1" = 40'  
 PLAN DATE: 2.4.2015  
 PROJECT NUMBER: 08597

PREPARED FOR:  
 BEACHES HABITAT FOR HUMANITY

PROJECT NAME: HAYWOOD ESTATES - ADDITION  
 SHEET TITLE: CONCEPTUAL SITE PLAN  
 SHEET NUMBER: [Blank]

GENESIS GROUP  
 FROM VISION TO REALITY  
 9822 TAPESTRY PARK CIR. SUITE 201, JACKSONVILLE, FL 32246  
 Phone 904.730.9380 Fax 904.730.7165 www.GenesisGroup.com  
 FL CA 0009860 FL LB 000816 FL LC 2600202



|   |   |      |
|---|---|------|
| Total gross acreage.  | 1.34 AC.  | 100% |
| Amount of different land use by acreage.                      | Residential 1.34 AC.                                    | 100% |
| Total number and type of dwelling units by each type of same. | 4 Single Story Duplex Units<br>8 Two Story Duplex Units | N/A  |
| Total amount of open space. (dry pond tract)                  | 0.30 AC.  | 22%  |
| Maximum coverage of buildings and structures at ground level. | 12,000 SF   | 21%  |

O.R. 6057, PG. 2020  
 O.R. 16292, PG. 2226

February 4, 2015  
 Exhibit 3  
 Page 1 of 1